

Petersborough, Ontario	4035	50,000 (?)	K		
St. Thomas, Ontario	4260	110,000			
Toronto, Ontario	4530	16,000,000	950,000	500,000	
Windsor, Ontario	4940	593,000			
Lennoxville, Quebec	0592	45,000			
Montreal, Quebec	0700	6,000,000	700,000	700,000	
Quebec, Quebec	1050	800,000	K		
Moncton, New Brunswick	X809	80,000 (?)			
Saint John, New Brunswick	X910	30,000			
Halifax, Nova Scotia	X275	100,000			
Winnipeg, Manitoba	5850	1,800,000	100,000	50,000	
Moose Jaw, Saskatchewan	7120	200,000	K		
Regina, Saskatchewan	7420	900,000	50,000		
Saskatoon, Saskatchewan	7550	300,000	50,000		
Yorkton, Saskatchewan	7877	140,000			
Calgary, Alberta	81608160	400,000	K	K	K
Edmonton, Alberta	8360	800,000	5,000 (?)		
Vancouver, British Columbia	9780	1,600,000	150,000 (?)	100,000	
Victoria, British Columbia	9890	75,000			

J. LEVINE

Further Notes on the Newfoundland Provisional of 1897

BY WILLIAM AND DANIEL MEYERSON

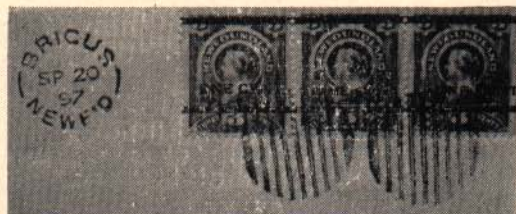


Fig. A



Fig. B

Mr. W. Norman Fox, BNAPS #216, of Toronto, Canada, has thrown an interesting light on the Newfoundland Provisional of 1897 that we discussed at length in the March 1946 issue of *BNA TOPICS*. We stated at that time that the surcharged stamps were placed on sale during October 1897. This statement was made on the strength of information gleaned from the articles written by Jarrett, Boggs, Poole, Huber, Strange & Gibbons. All these authorities agreed that the provisional was placed on sale early in October.

Now, along comes Mr. Fox with the part cover (Fig. A) that throws an entirely new light on the subject, since it bears a superb strip of 3 of the surcharged 1897 Provisional consisting of one Type 'B' and two Type 'C' (positions 48, 49 and 50 in the setting) postmarked from Brigus on SEPT 20, 1897, or *ten days earlier* than any previous record of use. To further confirm the early use of this Provisional the piece is backstamped at St. John on Sept. 21, 1897. (Fig. B). While it is possible that the postmark on the face might have been in error, it certainly seems illogical to believe that the backstamp which compliments the postmark on the face so perfectly would also be in error.

The only conclusion that we can draw from this new evidence is that the surcharged stamps were issued at least as early as Sept. 20, 1897 and not early in October as we had previously believed.

Do any of our members have any further information that can throw any light on the first day of issue of this Provisional?

We are also in receipt of a letter from Mr. Stanley A. Wood, BNAPS #221, of Auckland, New Zealand, who makes mention of a minor variety in the setting of the surcharge that did not find a place in the previous article. This variety was first brought to our attention when we read Harmer's *Stamp Hints*, published in February, 1942. This concerns stamp #26 in the setting (Scott #75). In the case of this one particular stamp, the letter "C" of the surcharge "ONE CENT" is *sans serif*. However, an examination of the stamp in question leaves a doubt in our minds as to whether it is really a sans serifed "C" or a mutilated "C".