

Trail of the Caribou

Freres Meyerson

Pre-stamp Covers

We have just completed a monograph on the pre-stamp covers of Newfoundland. It has been 22 months in the making and, in our opinion, is the most comprehensive study of its kind. As soon as the manuscript is rechecked it will appear in BNA TOPICS, possibly in an abridged form. Meanwhile, we would like to hear from any of you who know something or have something in that field. Look over your material, and please get in touch with us if you do have something. There's still time for us to include any new data or material in the manuscript.

Insufficiently prepaid mail

1) **ORDINARY LETTERS:** Ordinary letters on which no postage has been prepaid or on which only part of the appropriate postage has been prepaid, must be sent forward by surface means, taxed double the amount of the deficient postage.

2) **AIRMAIL LETTERS:** Airmail letters which are insufficiently prepaid may, if the sender is known and can be conveniently contacted, be held and the sender advised as to the correct amount of postage due. If the

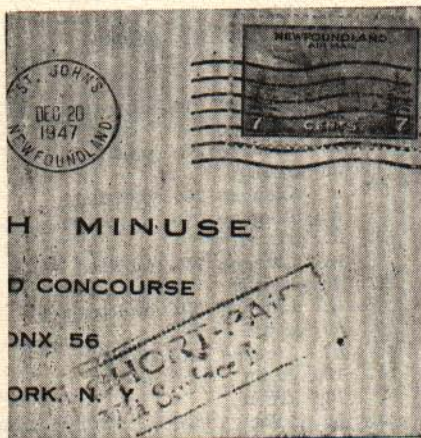
sender pays the additional postage, stamps must be affixed and the item sent forward by airmail. If the sender is not known, or cannot be contacted, or if he refuses to pay the additional postage required, the letter must be endorsed "Shortpaid—Surface Means" and then treated as if it were posted for transmission by surface means. (In case you have any idea that the authorities don't mean business, have a peek at the item BNAPSer Ken. Minuse received last December).

Air Letter Forms

Air Letter Forms were introduced on 1 August 1942 for the purpose of sending communications to the Armed Services only. On 11th September 1944, they were authorized for general use to all Empire countries at the rate of 10c per air letter. The forms currently being used do not bear Newfoundland on them nor are they stamped. They are provided free to users at post-offices and the required postage must be affixed.

Over 500 Post Offices

Yep, there are more than 500 Post Offices in Newfoundland, exclusive of Labrador. That may mean nothing to some of you, but it means a great deal to BNAPSer Jim Culhane, #280, who is planning to write to each postmaster requesting him (or her) to mail back the self-addressed envelope that is enclosed. Jim won't miss a Post Office as we sent him the Newfoundland Postal Guide as reference. We'll bet he gets some interesting strikes for his efforts; perhaps some TPO's and RPO's that have not been chronicled to date. We're certain that the best wishes of his fellow members are with BNAPSer Jim Culhane in this worthy project.



Freres Meyerson will be pleased to answer any questions on Newfoundland stamps or postal history. Send your queries to the Editor for reply in BNA TOPICS.