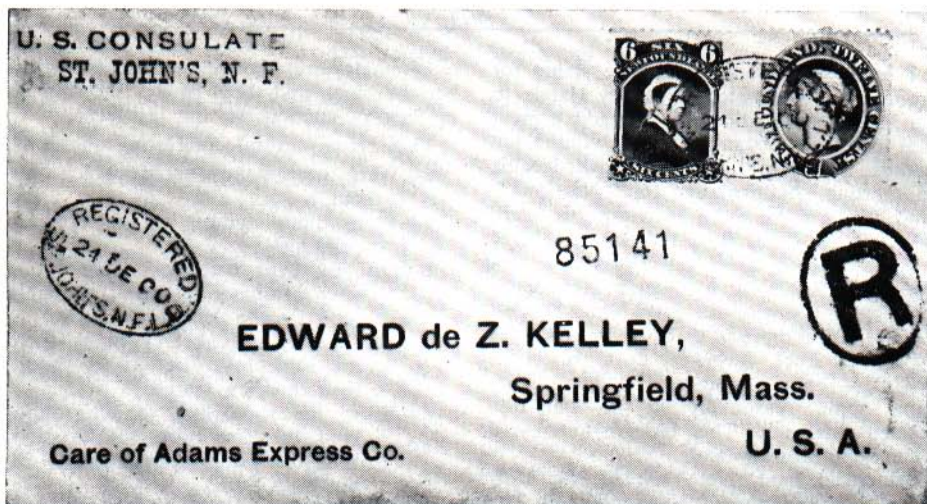
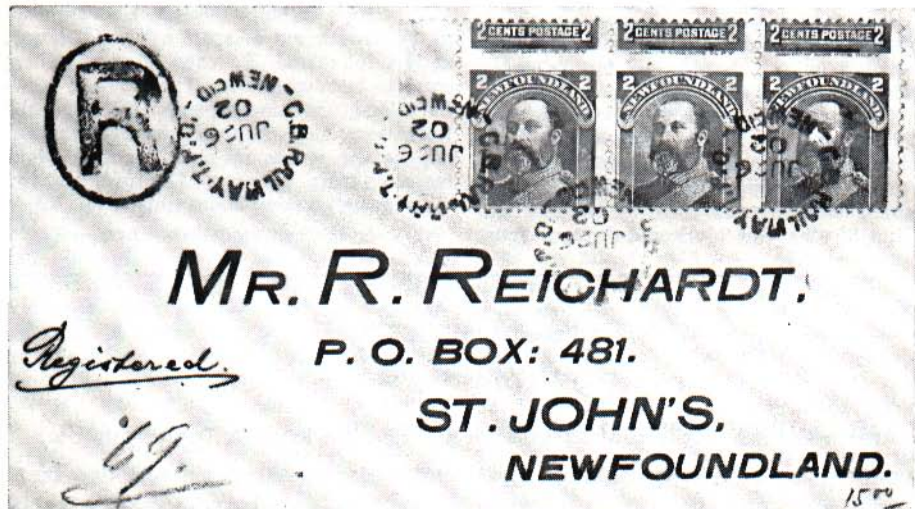


NEWFOUNDLAND COVERS

by N. W. Scales



A perfect colorful cover for any collection. A U.S. consulate cover of St. John's N.F. from St. John's to Springfield, Mass. backstamped in Violet. The 12c puce brown (the only puce in Scott's) and the 6c carmine lake. Large Black R for Registry. Postmarked and tied by an oval Registered 24 — DE — 00 — St. John's, N.F.L.D.



Scott's #82 (horizontal strip of three perforation variety) on a registered cover to St. John's. Postmarked and tied by a Railway postmark "C. B. Railway — T. P. O. JU 26 02 NEWFLD."

Backstamped Railway Traveling Post Office "N. N. & W RAILWAY-T-P-O JU 26 02 NFLD" and arrival postmark "ST. JOHN AM JU 27 02 NEWFLD.," both in black.