

THE BOX AND OVAL POSTMARKS OF NEWFOUNDLAND

by N. W. Scales, B.N.A.P.S. 1058

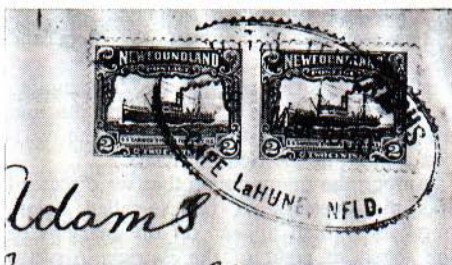
The Post Office Newfoundland Box Postmarks was used by about twenty towns from the period of 1918 to 1933. The earliest date Mar. 21, 1918 from Bell Island, C.B. in purple.

One being from Stag Bay, Labrador in Red. This town is now a ghost town and no postoffice remains. This cover could have been an air mail cover from that early period of the 1922 and 1923 flights.



Have another Labrador T.P.O. 1927 in a bright green, and an air mail cover Per Aerial Mail, St. Anthony in black, to St. John's, dated April 22, 1922.

Other Box Postmarks in blue, carmine, green and shades of red. Towns: Coley's Point, St. Bernards, Bishop Falls, Hearts Content, Burlington, St. George, Springdale, Burin North, Stephenville Crossing, Hampden Bay De Verde and Port Anson.



The oval Postal Telegraphs seem to have a shorter period of usage from 1930 to 1935. See photo for postmark. They come in as many colors as the Box cancel, but from different towns and find some used on Post Cards and also on backs of covers as a receiving mark. I have about the same number of oval covers and cards as I have of the Box Postmarks.

(Continued from page 316)

could be de-ciphered. It was also an early practice to completely fill a page with writing from top to bottom and then to write on all exposed edges and across the page as well.

These sheets were folded in upon themselves and sealed and then addressed upon the exposed front. Collectors of these early covers quite often find the letter inside to be every bit as interesting as the postal cover itself. By 1851 when Canada took over control of her postal system envelopes

were coming into use and folded letter sheets rapidly disappeared.

Early envelopes themselves are an interesting study. Sizes varied but tended to be small and in fact some were so tiny that when the Large Cents Issue came into use in 1868 some public outcry arose that the stamps were too large for use on the current envelopes available for the gentler sex. Mourning covers, black-edged envelopes, were fashionable during the period and were used to soften the blow of sad news. These covers are much sought after by collectors to day.

CONTINUE TO GET NEW MEMBERS