



# The RPO Cowcatcher

Lewis M. Ludlow

Gamlen Far East, No. 303, No. 1 Iwata Bldg.

10-18 Higashi Gotanda 5-chome, Shinagawa-ku, Tokyo 141, Japan

## Newfoundland

For our specialists in Newfoundland T.P.O.s, the hammer analysis of the Newfoundland listings moves on apace in the R.P.O. Study Group Newsletter. Presentation has now been completed through N-50, and it would appear that the work on this project will be finished this year, subject to the number of Newsletters available. Already collectors are coming with supplemental information which will be published in the Newsletter as we go along. Further, Bob Pratt has kindly advised us of some new proof data with which we were not familiar, and this will greatly assist our hammer analysis work of Newfoundland.

## Another Train Wreck

A few years ago, Jim Lehr sent to us an R.P.O. strike which we picked up as a new listing, W-87W, M. JAW & CAL. R.P.O./?, Type 4?. As illustrated in Fig. 1, this can-

cellation reads exactly the same as W-87, Type 17A, but it appeared to be a rimless Type 4 cancellation in contrast to W-87, which has an external ring. The bottom portion of Jim's strike was missing; however, it seemed that there was sufficient to warrant a new listing.

Further study has clarified the situation on this R.P.O., and we must advise that rather than being a separate listing, it is merely a very worn hammer of W-87, No. 4. As illustrated in Fig. 2, by April 6, 1945, the upper portion of this W-87 hammer was completely worn away; thus, when Jim's strike of December 16, 1946, (Fig. 1) appeared, it was understandably thought to be a rimless strike and a new listing. Chordal measurements have confirmed that these two strikes are one and the same hammer, and accordingly W-87W is herewith delisted. Jim is in full agreement about our rationale and quite philosophic about the fate of his discovery.

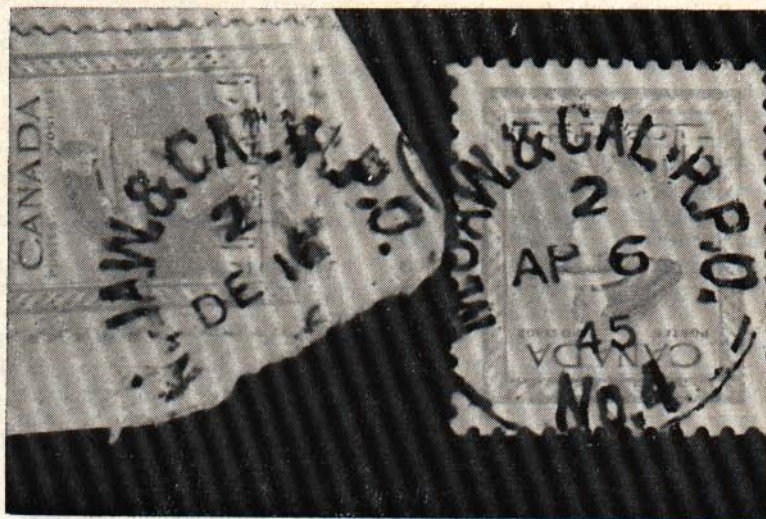


Figure 1

Figure 2